

# Installation of USB-RS232 under WinXP

Note:

1. Plug in the USB cable into the USB port of your PC, the system will detect the device.
2. Please install USB-RS232 and follow the procedure as below:

Step 1:

- (A) Select "Install from a list or specific location [Advanced]"
- (B) To insert the driver disk into your computer.
- (C) Click "Next" to continue.



Step 2:

- (A) Select "Search for the best in these locations".
- (B) Select "Include this location in the Search:"
- (C) Click "Browse" to select "E:\driver\WinXP" then click "Next" to continue.

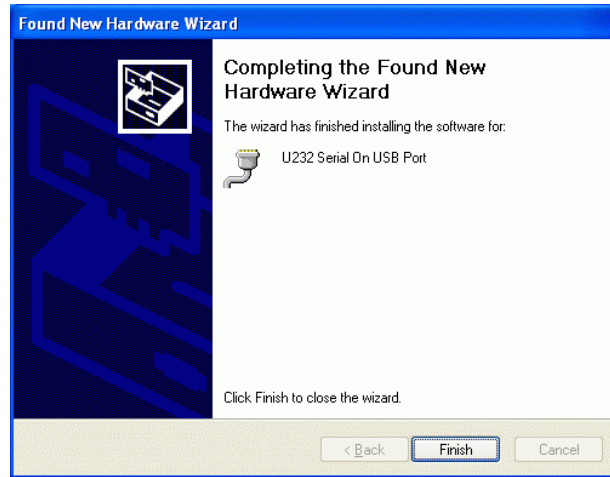


Step 3:

Click "Continue Anyway" to continue.



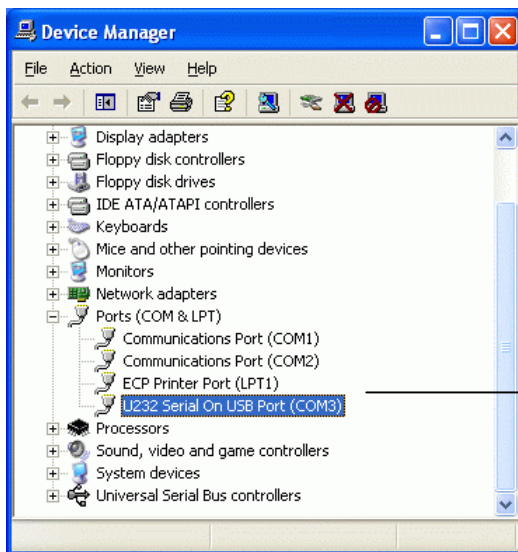
Step 4:  
Click “Finish” to complete setup.



◆ **Check USB-RS232 Device on Device Manager installed Successfully**

Please follow the path as under listing :

1. “My Computer”→ “Control Panel”→ “Performance and maintenance”→ “System” → “Hardware” → “Device Manager”
2. Move the cursor to “Ports (COM & LPT)” and click it, then you will see the device “U232 Serial On USB Port (COM3)”



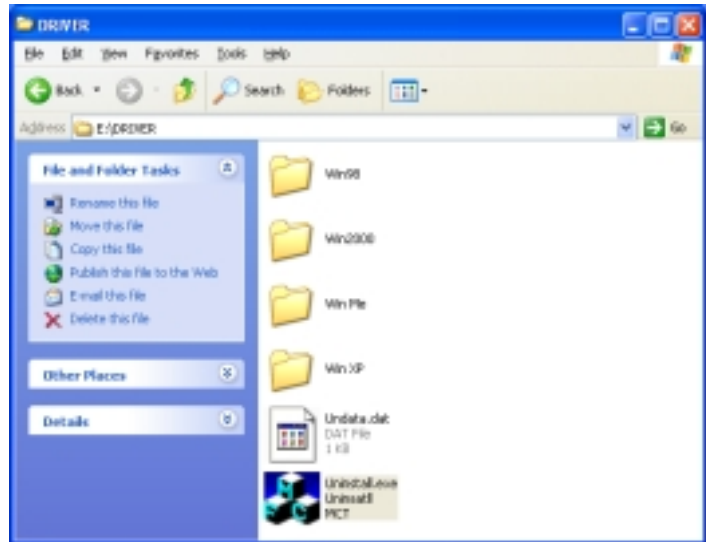
USB Serial On USB Port (COM3)

## ◆ Uninstall

If you want to remove the driver of USB-RS232 Converter, please insert the driver disk into your computer and follow the procedure as below:

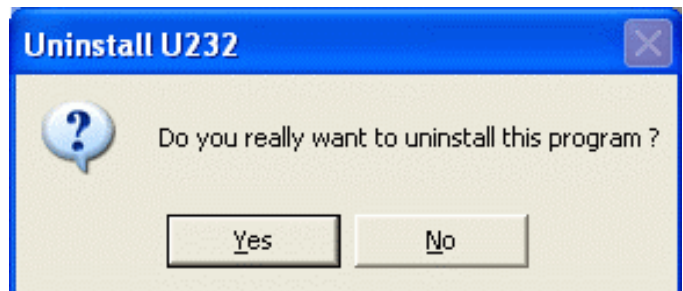
### Step A:

Double click “Uninstall.exe”  
to uninstall from your CD-ROM.  
The path is E:\driver\uninstall.exe



### Step B:

Click “yes” to continue.



### Step C:

Click “Yes” to restart your computer  
And complete removing the driver  
Of USB-RS232 Converter.

